

REFRACON SDN. BHD. (346847-K)

Lot 35, Lorong 1B, Kampung Baru Subang, Seksyen U6,
40150 Shah Alam, Selangor Darul Ehsan, Malaysia
Tel: 603-7846 3857, 7846 4139, 7846 5179, 7846 5448, 7846 5619, 7846 5771
Fax: 603-7846 4166 E-mail: refraconsb@gmail.com Website: www.refracon.com.my

INTRODUCTION

Zhejiang ASKE Building Materials Technology Corp ASK CALCIUM SILICATE is an asbestos free insulating material reinforced with inorganic fiber designed to provide excellent thermal and heat resistance insulation for a wide range of industrial heat insulation requirements.

Manufactured using the latest technology, this light weight material has excellent physical properties which offer the highest economical benefits that fulfill all energy saving requirements.

BENEFITS AND FEATURES

- Low Thermal Conductivity (within range of 0.042 w/mk to 0.052 w/mk at 70°C mean temp.)
- High Operating Temperature (our sectionals and boards have service temperature 650°C)
- Excellent Corrosion Resistance
- Extremely Light Weight
- Asbestos-Free
- Water Resistant
- Flame Resistant

STANDARD SIZES

CALCIUM SILICATE PIPE SECTIONAL / COVER

Diameter	From 15mm to 5000mm
Thickness	From 25mm to 75mm
Length	600mm (24")

CALCIUM SILICATE BOARD

Width	300mm (12")
Thickness	25mm to 100mm
Length	600mm (24")

REFRACON SDN. BHD. (346847-K)

Lot 35, Lorong 1B, Kampung Baru Subang, Seksyen U6,
40150 Shah Alam, Selangor Darul Ehsan, Malaysia
Tel: 603-7846 3857, 7846 4139, 7846 5179, 7846 5448, 7846 5619, 7846 5771
Fax: 603-7846 4166 E-mail: refraconsb@gmail.com Website: www.refracon.com.my

TECHNICAL DATA

Term	Unit	ASTM C533-09	JIS A9510-09	Zhejiang ASK
Density per ASTM C 303	Kg/m ³	≤250	≤220	≤206
Maximum Service Temperature	°C	650	650	650
Thermal Conductivity per ASTM C518/C1114	(25°C)			≤0.049
	(50°C)	≤0.060		≤0.0500
	(93°C)	≤0.065	≤0.065	≤0.0530
	(149°C)	≤0.072		≤0.0550
	(200°C)		≤0.077	≤0.0550
	(260°C)	≤0.087		≤0.0640
	(300°C)		≤0.088	≤0.0710
	(371°C)	≤0.102		≤0.0923
	(400°C)		≤0.106	
	(500°C)		≤0.127	
(538°C)		≤0.111	≤0.1002	
Linear Heat Shrinkage per ASTM C 356	%	≤2.0	≤2.0	≤1.3
Flexural Strength per ASTM C 203	MPa	≥0.344	≥0.30	≥0.40
Compressive Strength per ASTM C 165	MPa	≥0.689	≥0.45	≥0.875
Weight Loss by Tumbling per ASTM C 421 (First 10 minutes)	%	≤20		≤6.2
Weight Loss by Tumbling per ASTM C 421 (Second 10 minutes)	%	≤40		≤12.1
Hot Surface Performance per ASTM C 411 (650°C)	MM	1/4"(6) (No through-cracking)		1/4"(6) (No through-cracking)
Surface Burning Characteristics per ASTM E841	Flame Spread Index	0		0
	Smoke Developed Index	0		0
Moisture Content per ASTM C 1616	%	≤20		≤4
Non-Combustible Property per ASTM E 136		Pass		Pass
Chlorine Content		ASTM C795		ASTM C795

Item	Slab	Curved	Pipe
Length (mm)	600	600	600
Width (mm)	300/150	150/100	0.2"- 60" (inner diameter)
Thickness (mm)	25-100	25-100	25-100

Remark: Packing in standard export carton with plastic bag inside. Standard sizes showed as above, for further information, including nonstandard sizes, please contact Zhejiang ASK.

REFRACON SDN. BHD. (346847-K)

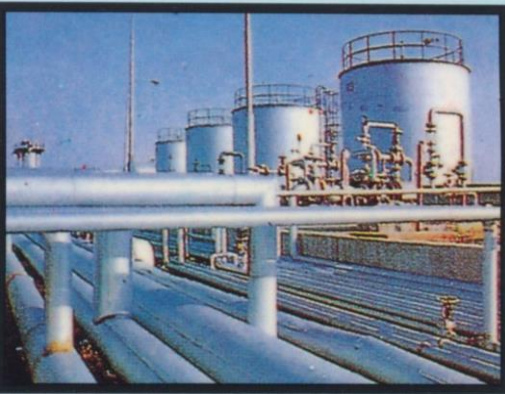
Lot 35, Lorong 1B, Kampung Baru Subang, Seksyen U6,
40150 Shah Alam, Selangor Darul Ehsan, Malaysia

Tel: 603-7846 3857, 7846 4139, 7846 5179, 7846 5448, 7846 5619, 7846 5771

Fax: 603-7846 4166 E-mail: refraconsb@gmail.com Website: www.refracon.com.my

INDUSTRIAL APPLICATIONS

- Petro-Chemical Plant
- Power Generating Plant
- Industrial Boilers and Furnaces
- Process Vessels
- Incinerators
- Refinery
- Heat Containment & Manufacturing Industry
- Offshore Rig, Pipeline, Pipe Support
- Storage Tank
- Fire Protection



REFRACON SDN. BHD. (346847-K)

Lot 35, Lorong 1B, Kampung Baru Subang, Seksyen U6,
40150 Shah Alam, Selangor Darul Ehsan, Malaysia
Tel: 603-7846 3857, 7846 4139, 7846 5179, 7846 5448, 7846 5619, 7846 5771
Fax: 603-7846 4166 E-mail: refraconsb@gmail.com Website: www.refracon.com.my

CALCIUM SILICATE PRODUCTS

CALCIUM SILICATE PIPE SECTIONAL



CALCIUM SILICATE PIPE BOARD



CALCIUM SILICATE POWDER

For use in irregular shape insulation, fillers of gap joints, other non-standard sizes and shape requirements